

# A MULTI GENERATIONAL OPPORTUNITY

## BRIXTON STRATEGY

-  Advancing both its Thorn Copper-Gold and Langis Silver Projects in Canada
-  Strategic investment by **BHP**
-  Monetizing non-core projects

## INVESTMENT HIGHLIGHTS

- Diversified precious and base metals portfolio in low-risk jurisdictions with major discovery **potential for Cu-Au-Ag-Mo**
- Strong shareholder base (BHP, Crescat, US Global, Ivanhoe Electric)**
- Well funded** for continued exploration
- Upside through Ivanhoe Electric and Eldorado Gold funded exploration at non-core projects (see Project Highlights)

## MANAGEMENT & DIRECTORS

**Gary Thompson** - Chairman & CEO  
**Cale Moodie** - CFO & Director  
**Michael Rapsch** - Vice President Investor Relations  
**Ian Ball** - Director  
**Kevin Chen** - Director  
**Ryan Goodman** - Director

## CAPITAL STRUCTURE

### TSX Venture Exchange

**BBB**

Share Price (April 20, 2026)	C\$1.04
Market Capitalization	C\$77M
Shares Outstanding	74.2M
Warrants	20.2M
Options	6.9M
Cash & Receivables (December 31, 2025)	C\$17.1M

## PROJECT HIGHLIGHTS



### THE FLAGSHIP THORN PROJECT (Cu-Au-Ag-Mo)

- District-scale Cu-Au porphyry and epithermal camp
- Identified 20 large scale Cu-Au targets
- Planned drill program in late May

### LANGIS PROJECT (Ag-Co)

- Past-producing high-grade silver camp
- Ongoing drill program with plans to add second rig

### HOG HEAVEN PROJECT (Cu-Au-Ag)

- US \$44.5M Definitive Agreement for an Earn-in JV with Ivanhoe Electric Inc.
- Drill program underway targeting large scale Cu porphyry

### ATLIN GOLDFIELDS PROJECT (Au)

- Optioned to Eldorado Gold
- C\$8.1M in cash payments to Brixton and C\$5M spend to acquire 100%
- Summer drill program planned

## Thorn Project (Cu-Au-Ag-Mo)

A district scale **COPPER** and **GOLD** dominant exploration play with **multiple discoveries** on one of the **largest contiguous claim blocks** in BC.

- A massive **2,945 km<sup>2</sup>** claim block
- District-scale project** more than 18 mineralized exploration targets, including two recently discovered porphyries, **Catalyst and Tempest**

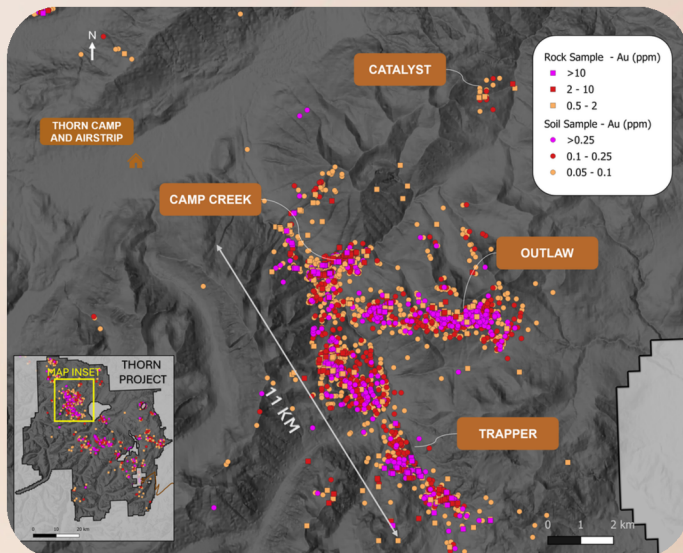
### TRAPPER GOLD TARGET

THN22-205 returned 64m of 5.74 g/t Au incl. 28.95m of 10.36 g/t Au

THN24-304 returned 8m of 11.37 g/t Au incl. 2m of 44.43 g/t Au

THN25-345 returned 22.15m of 4.44 g/t Au incl. 1.5m of 57.20 g/t Au

### GOLD GEOCHEMISTRY



### CAMP CREEK COPPER PORPHYRY

THN19-150: 554.70m of 1.02% CuEq incl. 135.96m of 2.43% CuEq

THN21-184: 821.25m of 0.54% CuEq incl. 318.25cm of 1.04% CuEq

THN22-201: 967.71m of 0.42% CuEq incl. 337.00m of 0.75% CuEq

Copper Equivalent (CuEq) is calculated based on US\$ 4.02/lb Cu, US\$ 2106.6/oz Au, US\$ 25.16/oz Ag, \$US 20.99/lb Mo.

These prices represent the approximate 1 year moving averages of metal prices and calculations assume 95% recovery

$CuEq \% = (Cu \% + (0.764486 * Au \text{ g/t}) + (0.009134 * Ag \text{ g/t}) + (0.000523 * Mo \text{ ppm})) * 0.95$

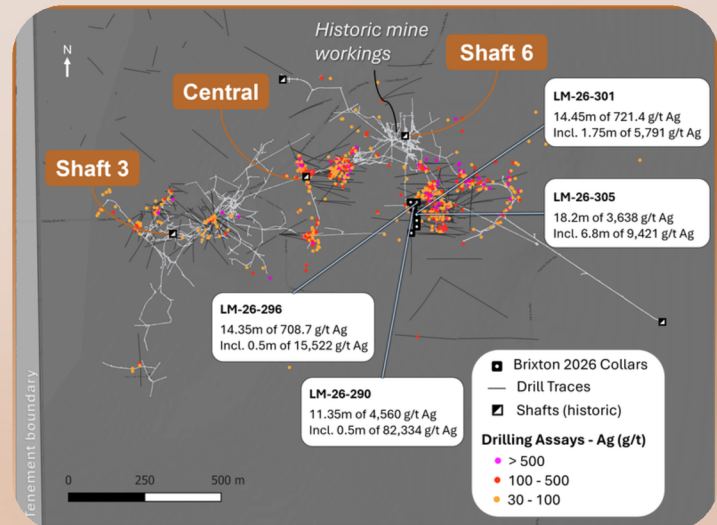


VISIT US ONLINE

## Langis Project (Ag-Co)

Past-producing **high-grade SILVER** mine, located 500km from Toronto, ON.

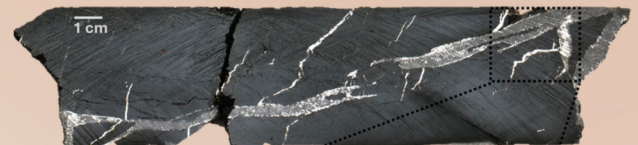
- Langis Mine **past production 10.4 Moz** at 25 opt (over 10 km of underground workings at Langis)
- Excellent local infrastructure:** year-round road access, power, rail and refinery nearby
- Low-cost drilling



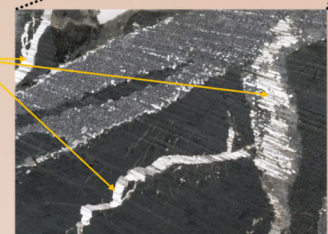
- Fully funded drill program underway with the intention to add a second drill
- Expansion and infill drilling of high-grade Silver zones

LM-26-290: ultra high-grade silver - 82,334 g/t silver over 0.5m

LM-26-305: 18.2 m of 3,638 g/t Ag incl. 6.8m of 9,421 g/t silver



Native Silver



Core photos of hole LM-26-305 from 121.3m of native silver and cobaltite veins