



brixtonmetals.com

# ATLIN GOLDFIELDS

MARCH 2024

TSX: BBB  
OTCQB: BBBXF  
FR: 8BX1



# SAFE HARBOUR STATEMENT



2

Information set forth in this presentation involves forward-looking statements, including but not limited to comments regarding planned drilling and other exploration, identification of new targets, and timelines, predictions and projections. Forward-looking statements are statements that relate to future, not past, events. In this context, forward-looking statements often address expected future business and financial performance, and often contain words such as "anticipate", "believe", "plan", "estimate", "expect", and "intend", statements that an action or event "may", "might", "could", "should", or "will" be taken or occur, or other similar expressions. By their nature, forward-looking statements involve known and unknown risks, uncertainties and other factors which may cause our actual results, performance or achievements, or other future events, to be materially different from any future results, performance or achievements expressed or implied by such forward-looking statements. Such factors include, among others, the following risks: the need for additional financing; operational risks associated with mineral exploration; fluctuations in commodity prices; title matters; and the additional risks identified on the Company's website or other reports and filings with the TSX Venture Exchange and applicable Canadian securities regulators. Forward looking statements are based on the Company and its management's good faith assumptions relating to the financial, market, regulatory and other relevant environments that will exist and affect the Company's business and operations in the future. Forward-looking statements in this presentation are not guarantees or predictions of future performance. Forward-looking statements are made based on management's beliefs, estimates and opinions on the date that statements are made, and the Company undertakes no obligation to update forward-looking statements if these beliefs, estimates and opinions or other circumstances should change, except as required by applicable securities laws. Investors are cautioned against attributing undue certainty to forward-looking statements.

A qualified person has not done sufficient work to classify the historical estimates in this presentation as current mineral resources or mineral reserves and the Company is not treating such historical estimates as current mineral resources or mineral reserves.

Mr. Gary R. Thompson, P.Geo., Chairman, President and CEO of Brixton, is the QP who approved the scientific and technical information in this Presentation.



# PROJECT LOCATION - NORTHWEST BRITISH COLUMBIA



**ATLIN - Au**

**TSXV: BBB**



**OROGENIC GOLD**

**BRIXTON  
METALS**

**[brixtonmetals.com](http://brixtonmetals.com)**

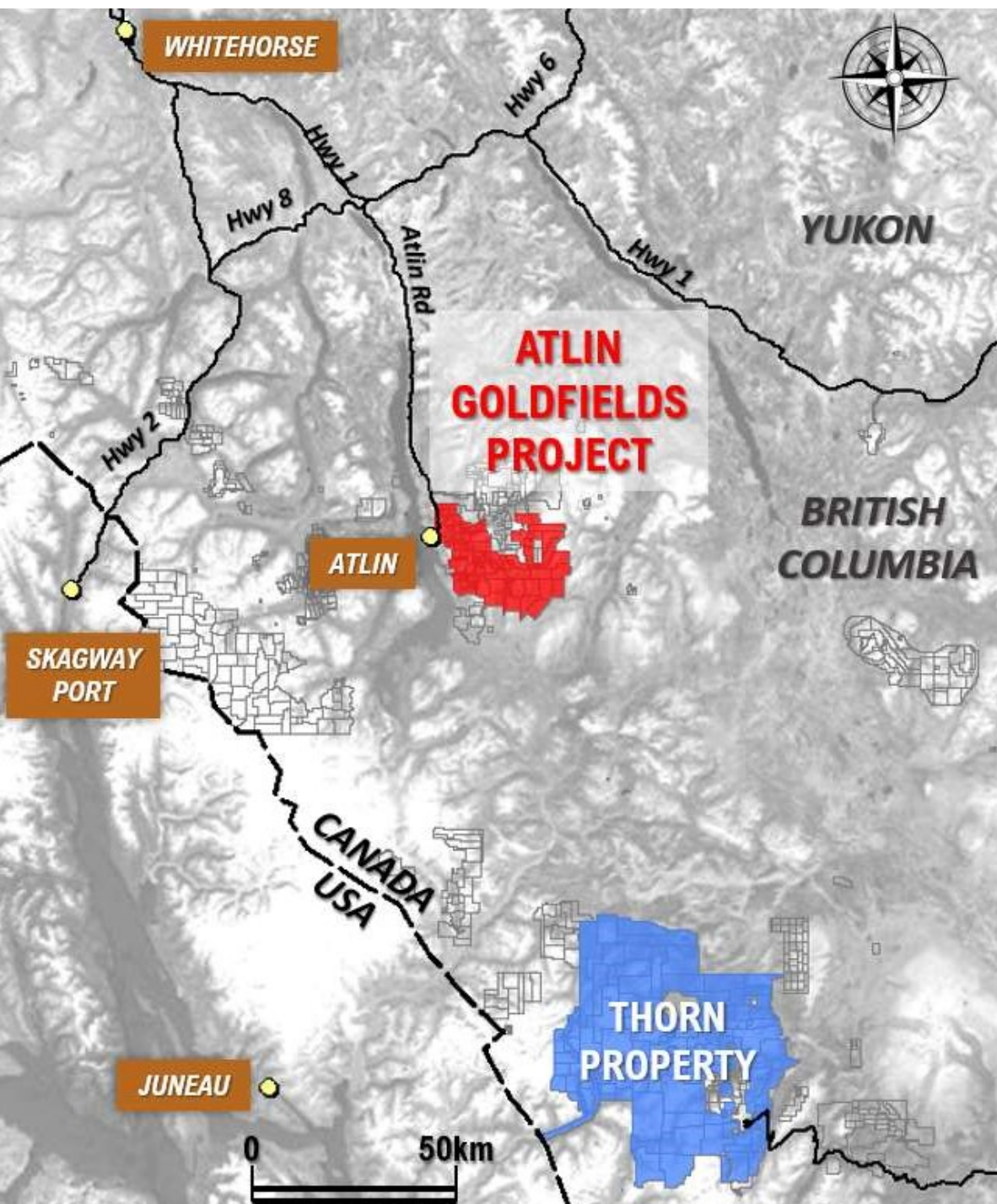
**Available for Option/JV/Sale**

**Exploring for the  
source of Atlin's  
prolific placer gold**

**CANADA**

**BRITISH  
COLUMBIA**





# ATLIN PROJECT



## • Beside the town of **Atlin, BC**

- Airstrip
- Population 500
- Gravel roads accessing the majority of showings on the claims

## • 175 km SE of **Whitehorse, Yukon**

- Daily flights from Vancouver, BC & Calgary, AB
- City has all amenities to service exploration
- Paved highway to Atlin

## • 249 km to **Skagway**

- Port access

## • Wholly-owned 579km<sup>2</sup> claim block

**In partnership with the Taku River Tlingit First Nation**

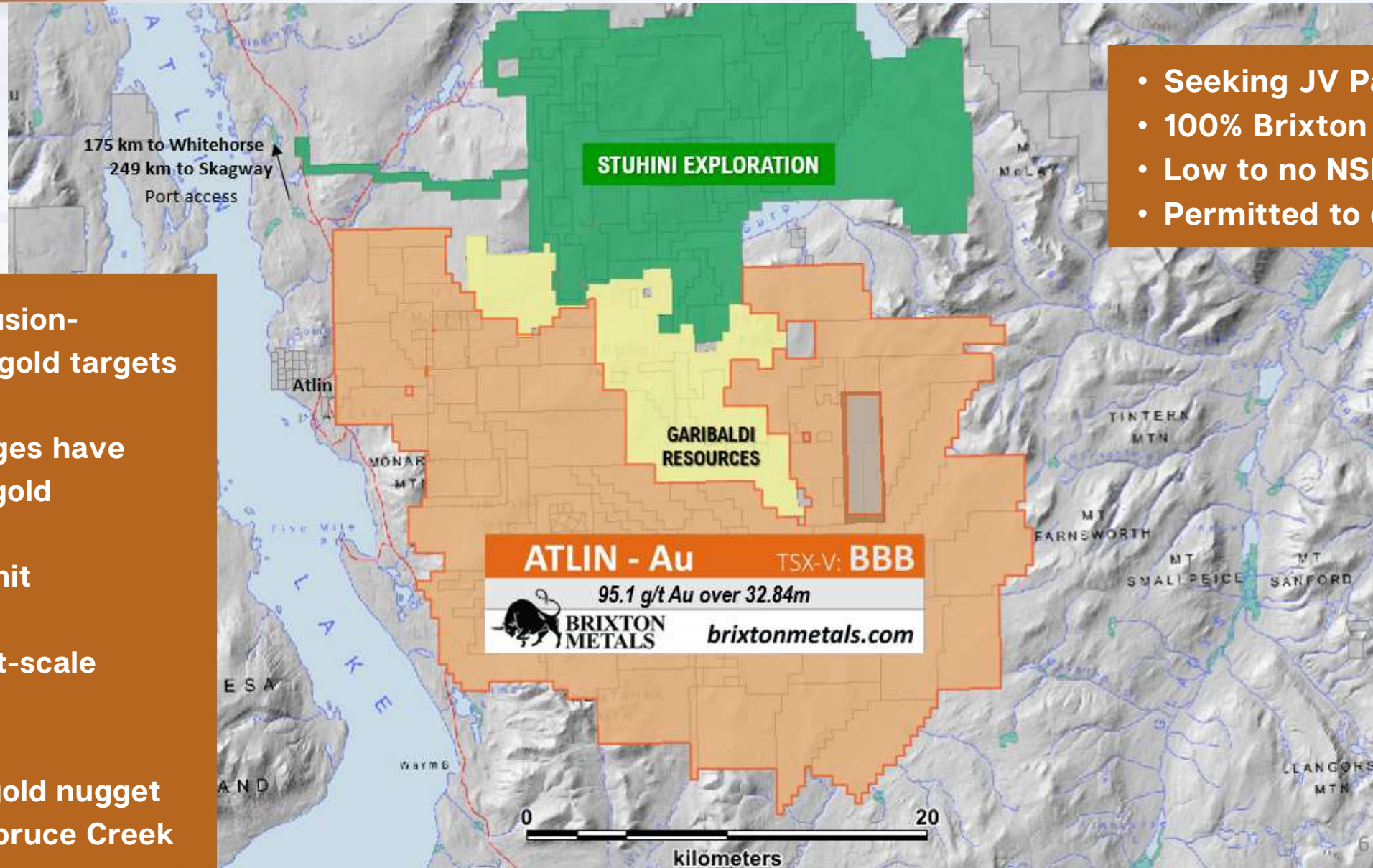


# ATLIN GOLDFIELDS PROJECT



5

- Seeking JV Partner
- 100% Brixton Owned
- Low to no NSRs
- Permitted to drill



- Orogenic and intrusion-related hard-rock gold targets
- Majority of drainages have generated placer gold
- 200 tpd Mine Permit
- 578.9 km<sup>2</sup> district-scale mineral tenure
- Canada's largest gold nugget (85 oz) found at Spruce Creek



# OROGENIC GOLD IN BRITISH COLUMBIA

6



Terrane map of significant orogenic gold deposits of BC and Yukon\*

Orogenic gold camps have produced over 10.2 Million oz Au in British Columbia, with resources growing annually

## CARIBOO/BARKERVILLE (Osisko)

- Historic production of **3Moz Au** from alluvium, and **1.2Moz Au** from lode.\*
- Probable Reserve of **2.03Moz Au** (16.7Mt @ 3.78g/t Au)\*\*
- Total M+I Resource of **1.57Moz Au** (14.68Mt @ 3.33g/t Au)\*\*

## BRALORNE (Talisker Resources)

- Historic production of **4.2Moz Au at 17.7 g/t**
- Indicated Resource of **0.033Moz Au** (0.117Mt @ 8.85 g/t)\*\*\*
- Inferred Resource of **1.633Moz Au** (8.033Mt @ 6.32 g/t)
- Mineralization to 2km depth

## CASSIAR (Cassiar Gold)

- Historic production of **0.425Moz Au+**
- Inferred Resource of **1.39Moz Au** (37.9Mt @ 1.14 g/t Au)

## SHEEP CREEK (Cassiar Gold)

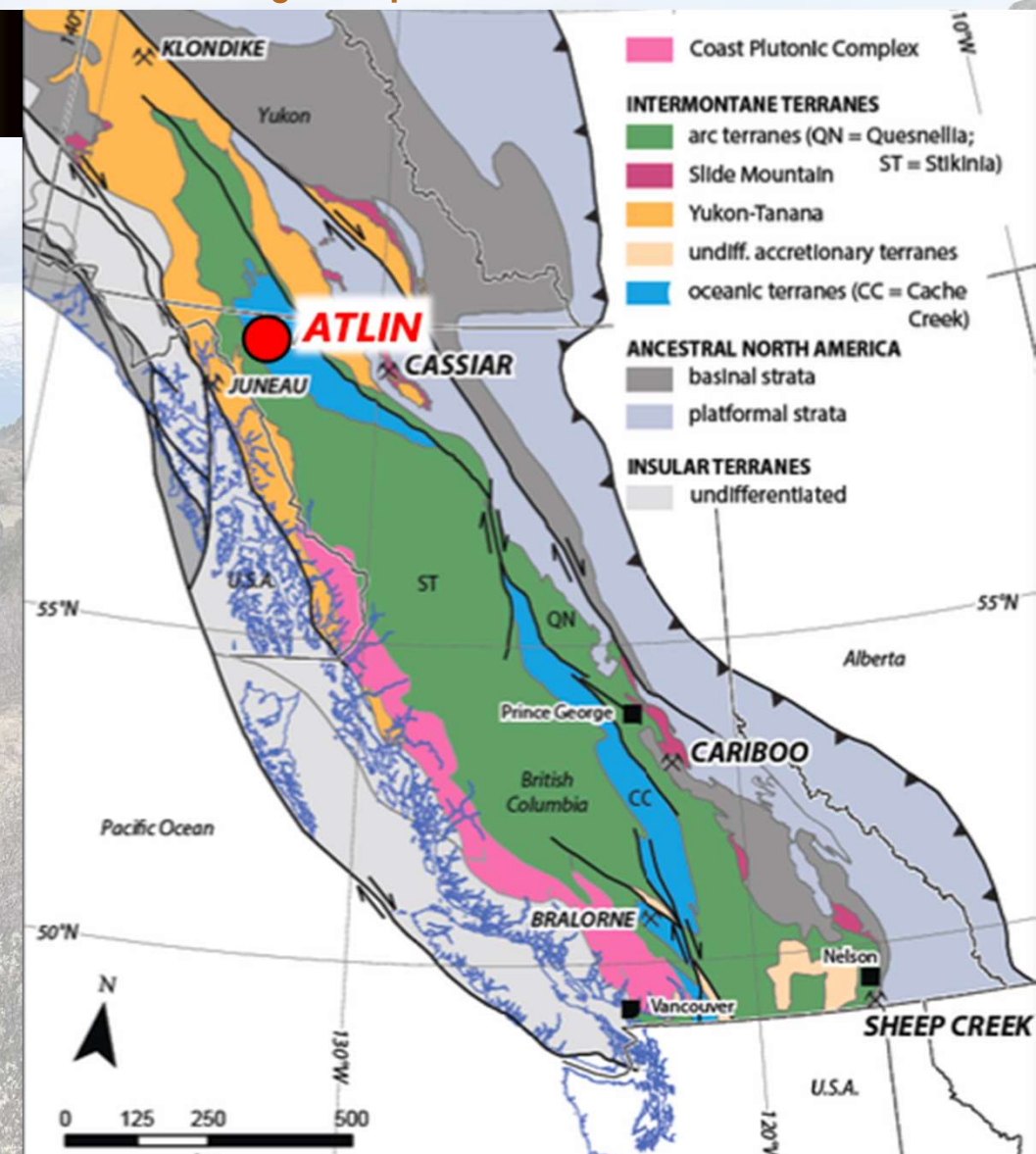
- Historic production of **0.742Moz Au** at 14.7 g/t Au

\*Allan, M.M., Rhys, D.A. and Hart, C.J.R., 2017, Orogenic gold mineralization of the eastern Cordilleran gold belt, British Columbia: Structural ore controls in the Cariboo (093A/H), Cassiar (104P) and Sheep Creek (082F) mining districts: Geoscience BC Report 2017-15, 108 p.

+<https://cassiargold.com/projects/cassiar-gold-project>

\*\* <https://osiskodev.com/cariboo-gold-project/>.

\*\*\*<https://taliskerresources.com/projects/bralorne>





# INTRUSION-RELATED GOLD IN YUKON & ALASKA



7

## TINTINA GOLD PROVINCE

### DUBLIN GULCH/EAGLE GOLD (Victoria Gold)

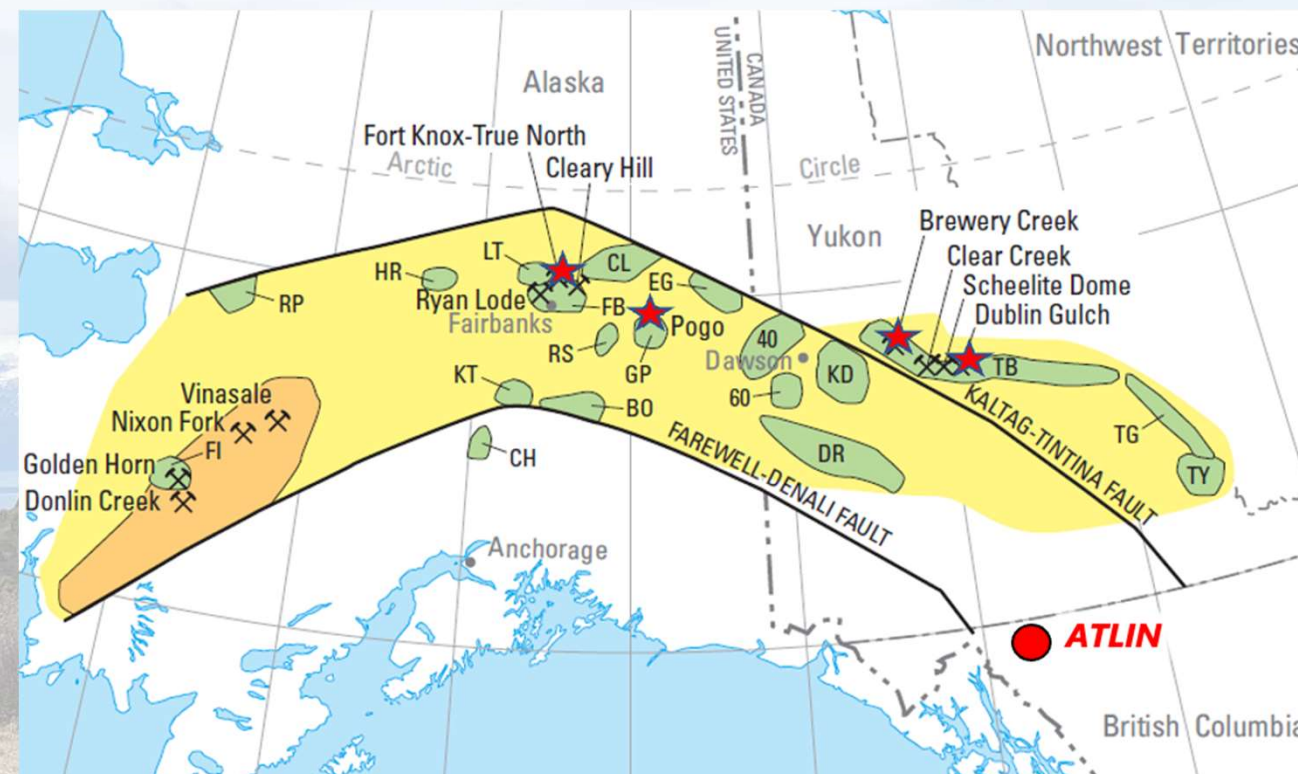
- Proven & Probable Reserve of **2.584 Moz Au**  
124.3Mt @ 0.65g/t Au\*
- Total M+I Resource of **4.30 Moz Au**  
233.2Mt @ 0.57g/t Au\*

### FORT KNOX (Kinross)

- Historic production of **7.5 Moz Au**  
**469 Mt @ 0.5 g/t Au\*\***
- Proven & Probable Reserve of **3.374 Moz Au**  
282.2Mt @ 0.37g/t Au
- Total M+I Resource of **1.262 Moz Au**  
117.4Mt @ 0.33 g/t

### BREWERY CREEK (Golden Predator)

- Historic production of **0.28 Moz Au+**
- Total M+I Resource of **1.14 Moz Au**  
34.5Mt @ 1.03 g/t Au)
- Inferred Resource of **1.016 Moz Au**  
36.0Mt @ 1.02 g/t Au



### POGO (Northern Star Resources)

- Produced over **4 Moz Au** at 13.6 g/t Au\*\*\*
- Indicated Resource of **3.395 Moz Au**  
9.665Mt @ 10.9 g/t
- Inferred Resource of **3.95 Moz Au**  
11.51Mt @ 10.7 g/t

\*Victoria Gold: <https://vgcx.com/development/eagle-gold-project/>

\*\*\*<https://www.nsrld.com/our-assets/pogo/>

\*\*Kinross\*\* [https://s2.q4cdn.com/496390694/files/doc\\_downloads/2018/Fort-Knox-June-2018-Technical-Report.pdf](https://s2.q4cdn.com/496390694/files/doc_downloads/2018/Fort-Knox-June-2018-Technical-Report.pdf)

+[https://www.goldenpredator.com/\\_resources/Brewery-Creek\\_NI-43-101-05OCT2020-File.pdf](https://www.goldenpredator.com/_resources/Brewery-Creek_NI-43-101-05OCT2020-File.pdf)



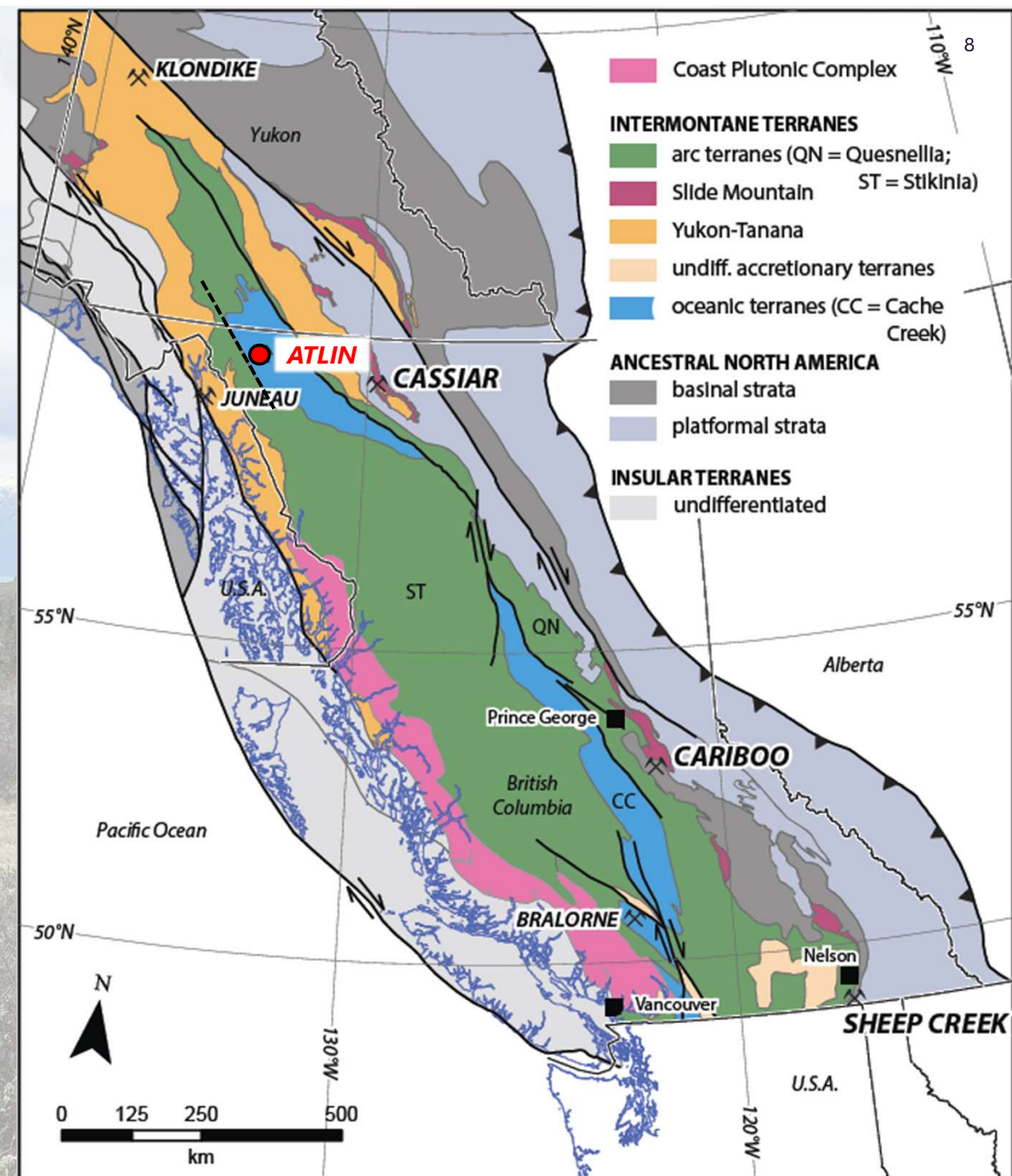
# ATLIN TERRANE

## CACHE CREEK TERRANE (BLUE)

Imbricated fore-arc accretionary complex thrust over the Stikinia-Quesnelia, Yukon-Tanana Terranes, and rocks of the Whitehorse Trough during Early-Mid Jurassic.

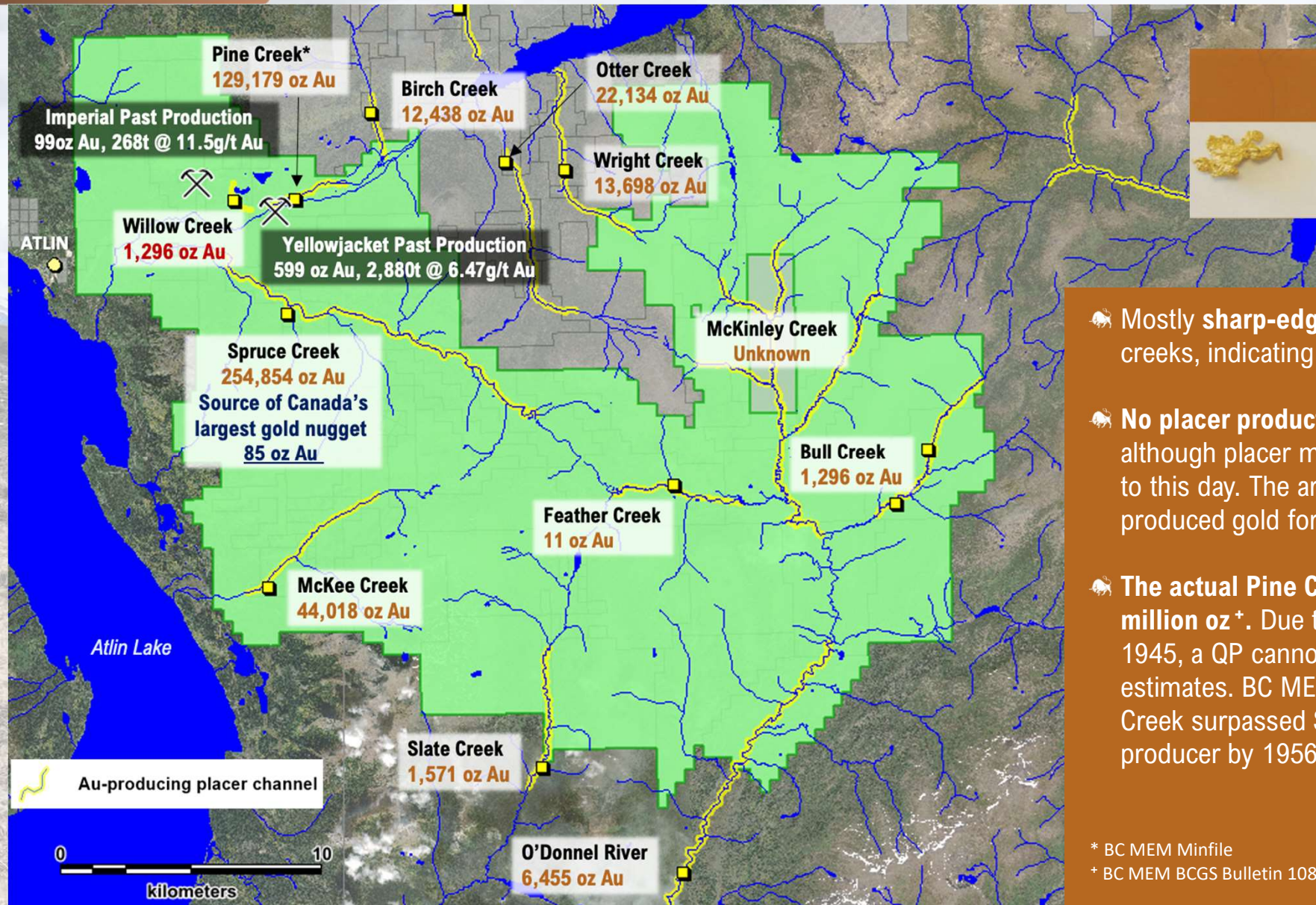
- **Atlin Ophiolite Assemblage** dominated by flat-lying thrust slices of oceanic and upper mantle rocks.
- **Atlin Accretionary Assemblage** structurally lower and younger; dominated by intercalated metapelitic sedimentary rocks and thick limestone successions.
- Atlin is located on the margin of a deep-seated structural boundary.

\*Allan, M.M., Rhys, D.A. and Hart, C.J.R., 2017, Orogenic gold mineralization of the eastern Cordilleran gold belt, British Columbia: Structural ore controls in the Cariboo (093A/H), Cassiar (104P) and Sheep Creek (082F) mining districts: Geoscience BC Report 2017-15, 108 p.





# ATLIN PLACER PRODUCTION



## Atlin "Hackly" Gold Nuggets



- Mostly sharp-edge, "hackly" gold nuggets observed in creeks, indicating proximity to a mineralized source.
- No placer production records have been kept since 1945, although placer mining in Atlin continues to produce gold to this day. The area was discovered in 1896 and has produced gold for 125 years.
- The actual Pine Creek past production estimate is over 1 million oz<sup>+</sup>. Due to the absence of historical records since 1945, a QP cannot substantiate these past production estimates. BC MEM Minfile states that production at Pine Creek surpassed Spruce Creek as the largest placer producer by 1956.

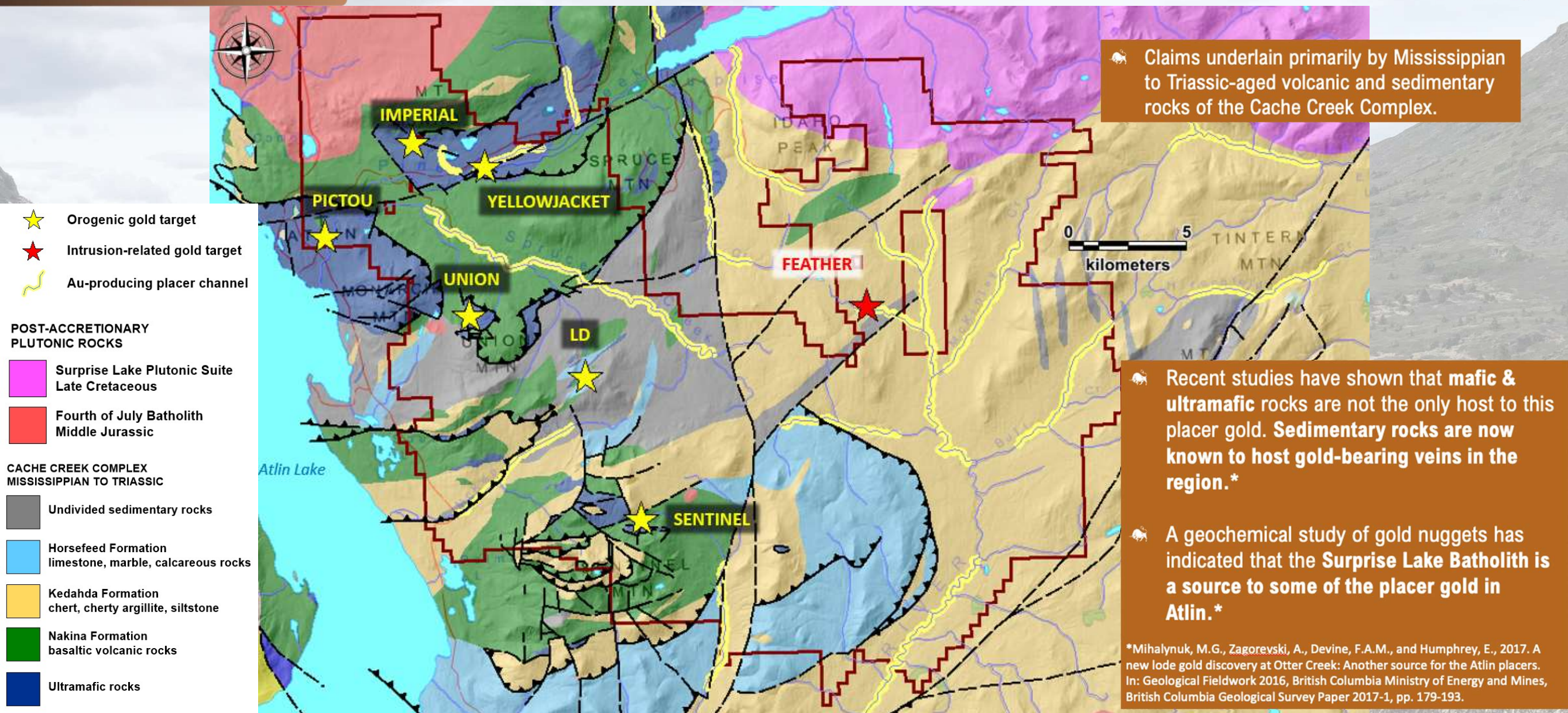
\* BC MEM Minfile

<sup>+</sup> BC MEM BCGS Bulletin 108, C.H. Ash 2001



# ATLIN GEOLOGY & TARGET AREAS

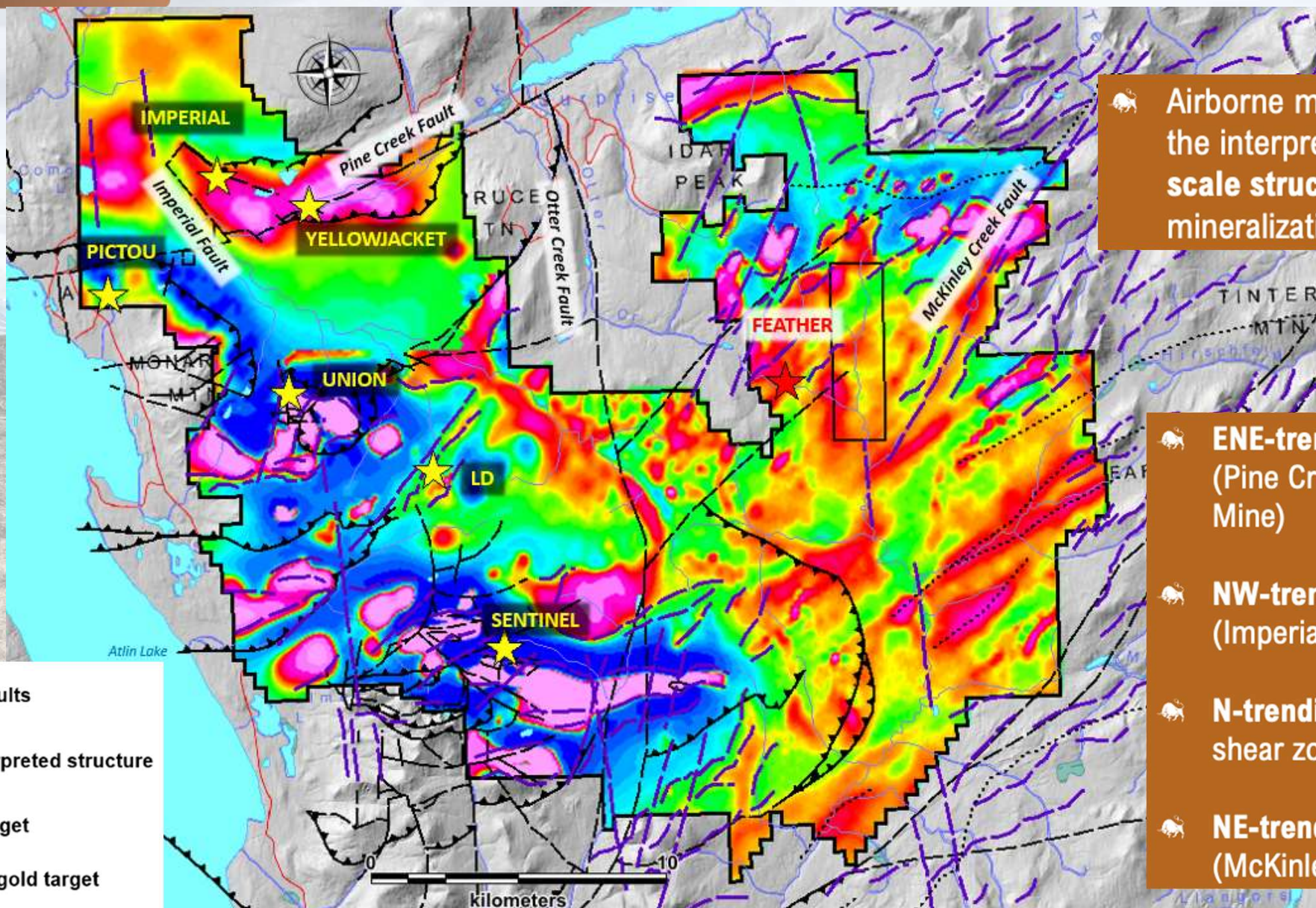
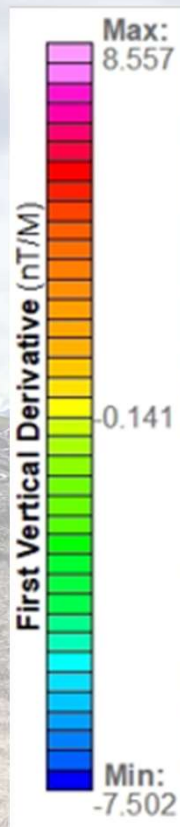
10





# ATLIN STRUCTURAL SETTING

11



Airborne magnetics (1VD) support the interpretation of **multiple district-scale structures favorable for gold mineralization.**

**ENE-trending structures**  
(Pine Creek Fault / Yellowjacket Mine)

**NW-trending structures**  
(Imperial Vein)

**N-trending faults and associated shear zones** (Otter Creek Fault)

**NE-trending faults**  
(McKinley Creek Fault)

- BCGS mapped faults
- Geophysical interpreted structure
- Orogenic gold target
- Intrusion-related gold target



# ATLIN MINERALIZATION STYLES

12

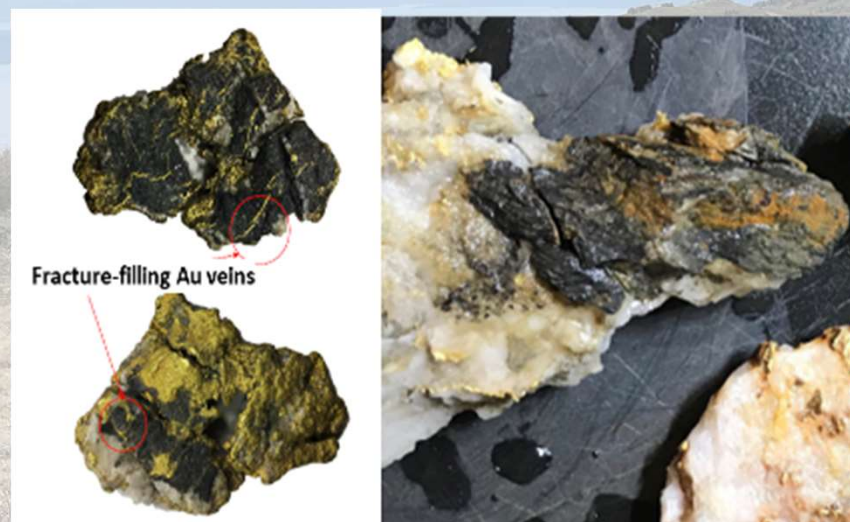


## OROGENIC, SHEAR-HOSTED GOLD

Free visible gold **hosted in quartz-carbonate veins** along **shear zones**. Silica-carbonate (listwanite) related gold mineralization is also associated with alteration of serpentinized mafic and ultramafic rocks.



Quartz-carbonate veins, stockwork and breccias are **hosted in cherty-argillite-to-phyllite metasedimentary rocks**. Gold mineralization occurs proximal to shear zones and lithological contacts.



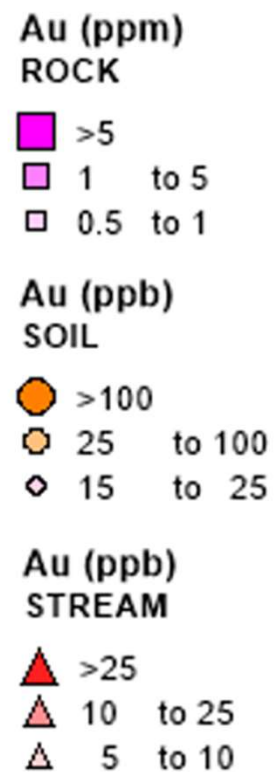
**Sediment-hosted gold-bearing vein collected from the bottom of placer pit, 2018.**

## INTRUSION-RELATED GOLD

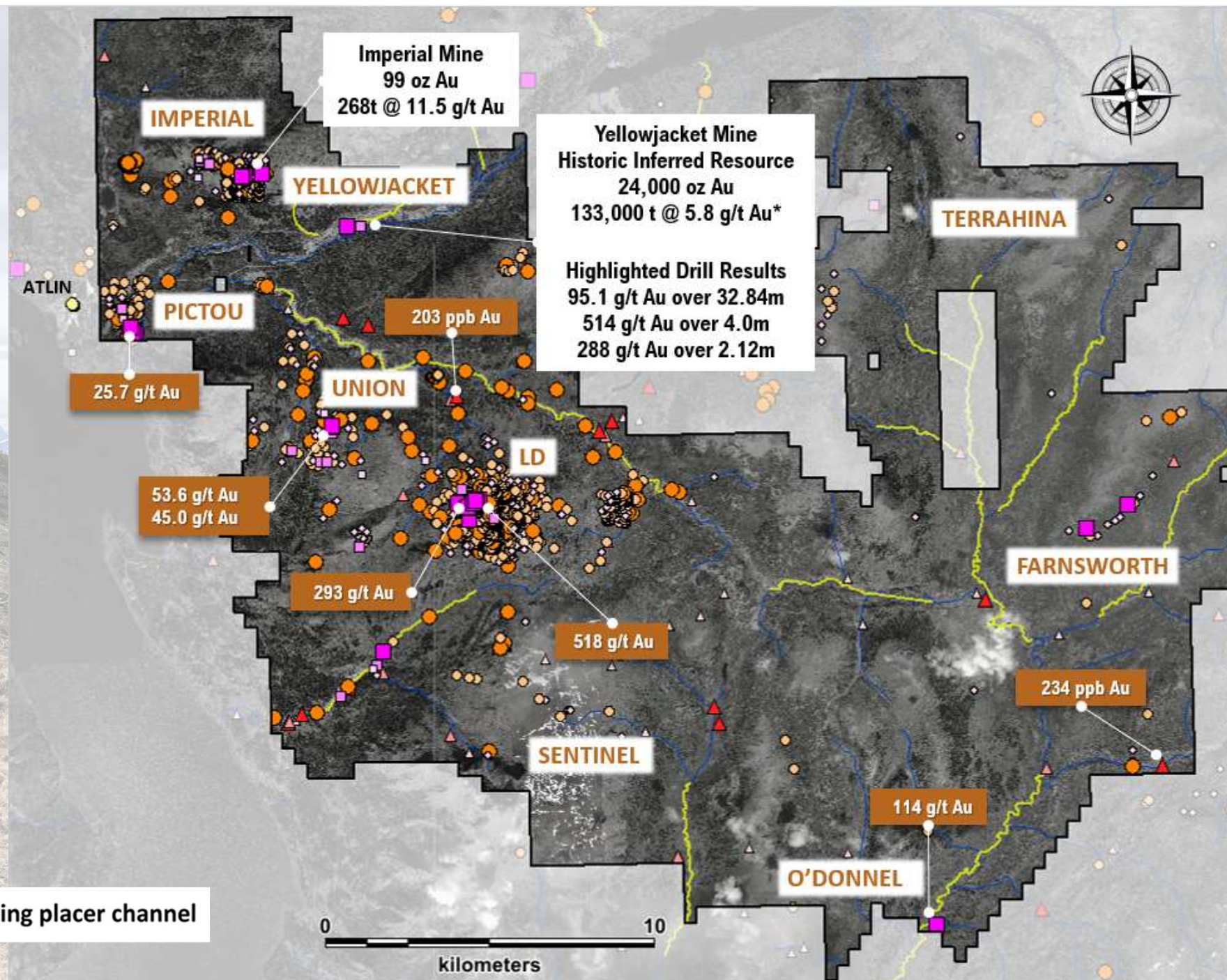
**Sharp-edged “hackly” gold nuggets** **intergrown** with cassiterite ( $\text{SnO}_2$ ) and thorite ( $\text{ThSiO}_4$ ) were collected from placer producing streams (i.e. Feather Creek), proximal to the Late Cretaceous (84 Ma) Surprise Lake Batholith.







Au-producing placer channel



**Large underexplored property with the opportunity for new lode gold discoveries**

*\*In 2010, Eagle Plains Resources Ltd completed a resource estimate for the Yellowjacket Mine (Price, B.J. and Dandy, L., 2010; Technical Report on the Yellowjacket Gold Project; 43-101 Report; prepared for Eagle Plains Resources and Prize Mining Corp.). The 2010 historic estimate has not been verified by a QP for Brixton Metals, and is considered historical in nature.*



# YELLOWJACKET MINE


**Permitted 200 ton/day mine,  
currently in care & maintenance.  
Maximum processing capacity of  
75,000 t/year.**

**599 oz Au recovered  
from a 2,880 tonne  
bulk sample in 2008,  
grading 6.5 g/t Au**


**Eagle Plains Resources Ltd.  
& Prize Mining Corp.  
produced approximately  
1,000 oz Au from 2007-2010**







14


 **Historic Inferred Resource Estimate**  
completed in 2010: 133,000 tonnes @ 5.8 g/t Au,  
**24,000 oz Au** (1.5 g/t Au cut-off)\*

-  Report notes that higher gold grades are at depth and require U/G mining
-  1,700m of drilling completed since the resource estimate

 **Total Drilling of 26,300 m** distributed as follows:

-  150 DD holes totaling 19,715m
-  160 RC holes totaling 6,935m
-  36 Channels totaling 1,440m (40m/channel).

 **Gold recovery through simple gravity circuit**  
(cyanide-free, no chemicals required).

 **Engaged with and building a respectful relationship  
with the Taku River Tlingit First Nations.**

**Permitted and Drill Ready**

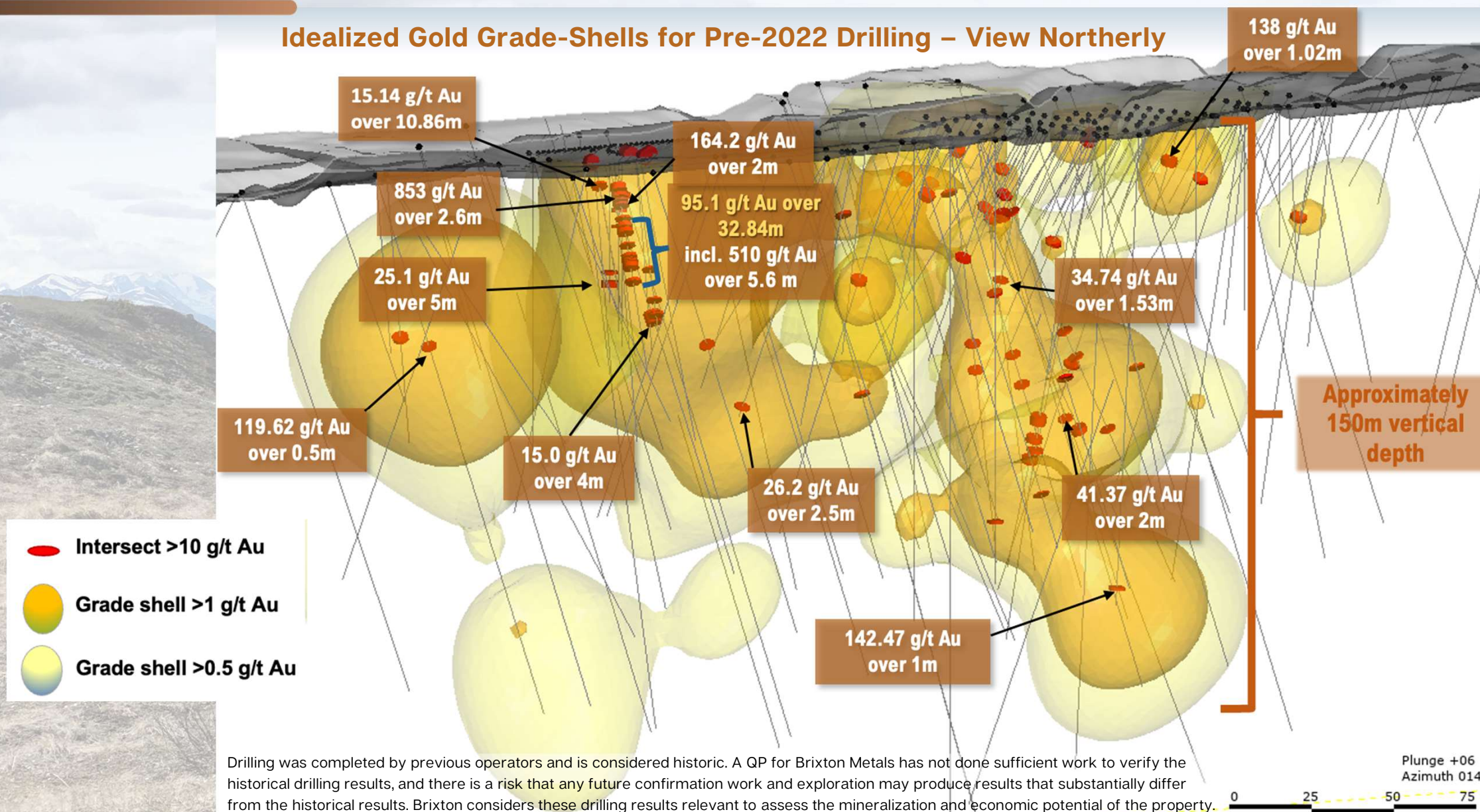
\*In 2009, Eagle Plains Resources Ltd completed a resource estimate for the Yellowjacket Mine (Price, B.J. and Dandy, L., 2010; Technical Report on the Yellowjacket Gold Project; 43-101 Report; prepared for Eagle Plains Resources and Prize Mining Corp). A QP for Brixton Metals has not done sufficient work to classify the historical estimate as a current mineral resource and the Company is not treating the historical estimate as a current mineral resource.





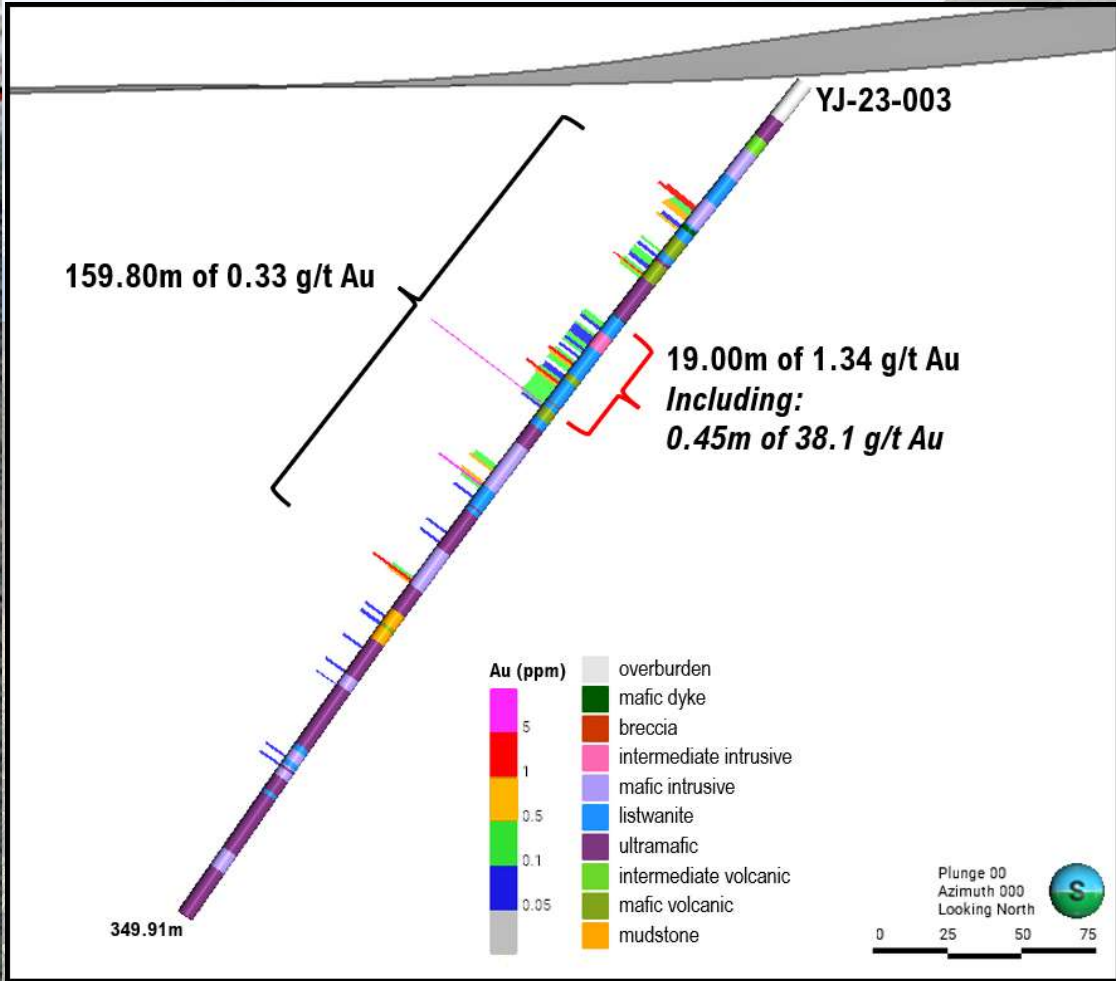
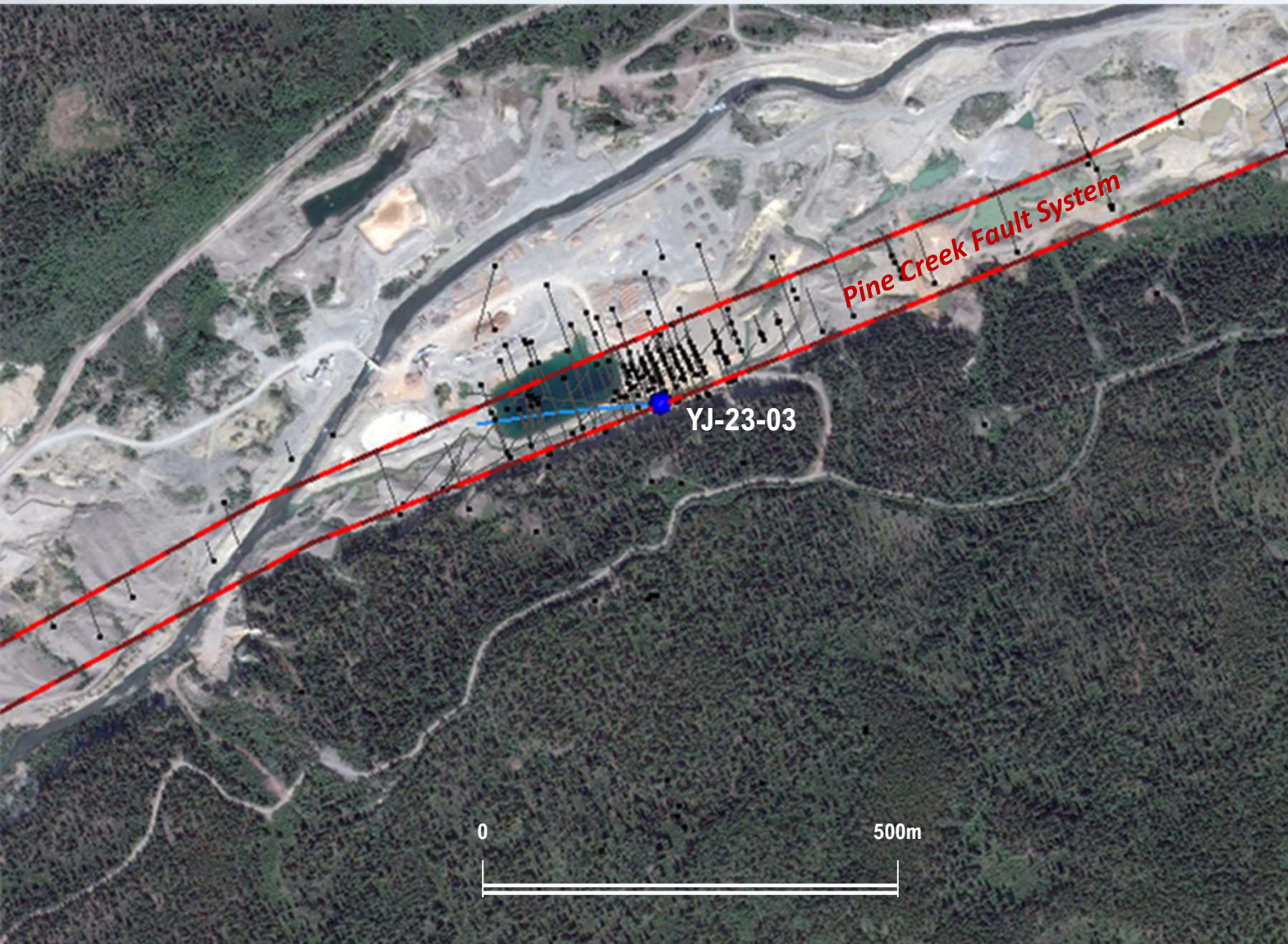
# YELLOWJACKET MINE HIGH-GRADE GOLD

Idealized Gold Grade-Shells for Pre-2022 Drilling – View Northerly





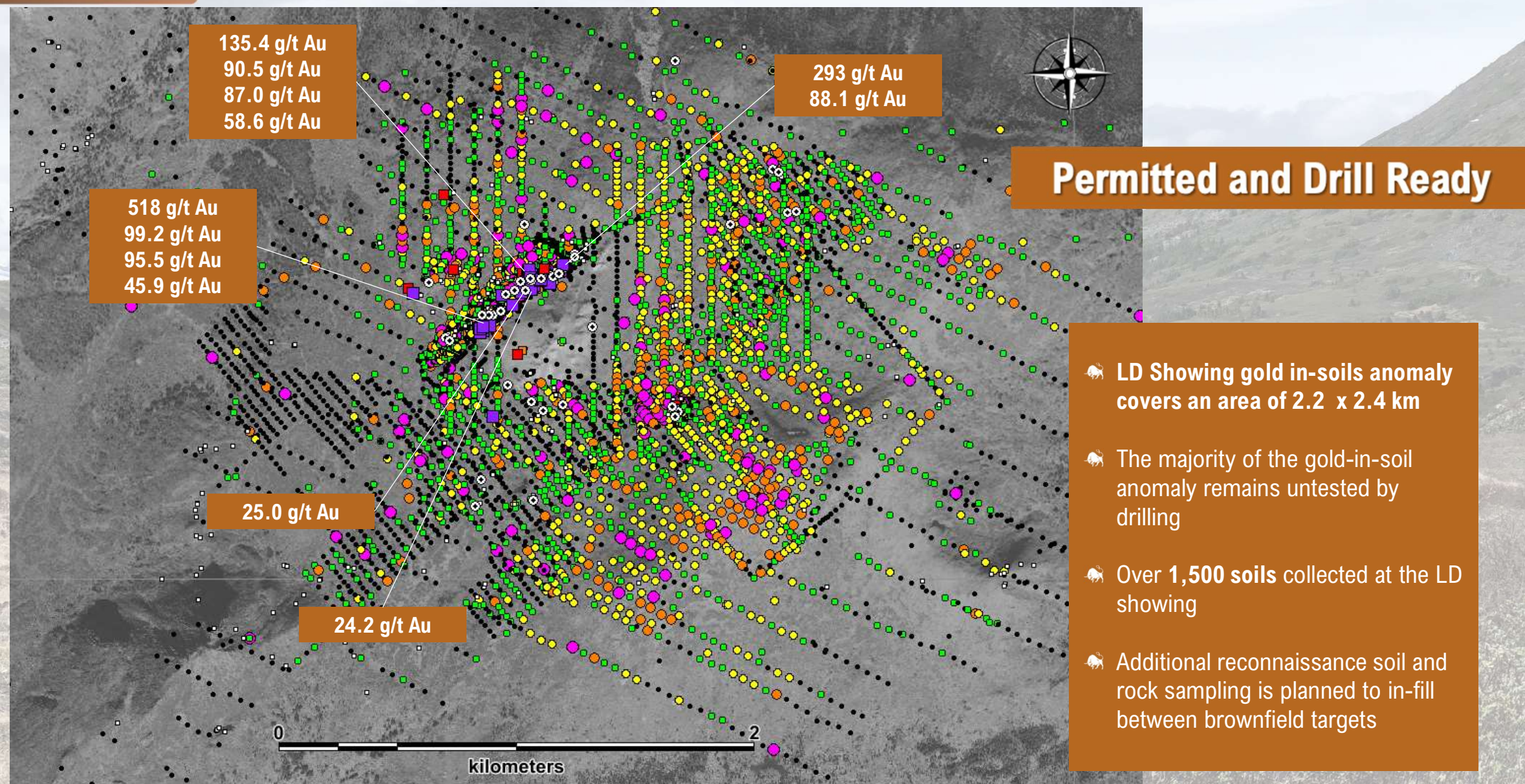
# YELLOWJACKET 2023 DRILLING







# LD SHOWING SURFACE SAMPLING



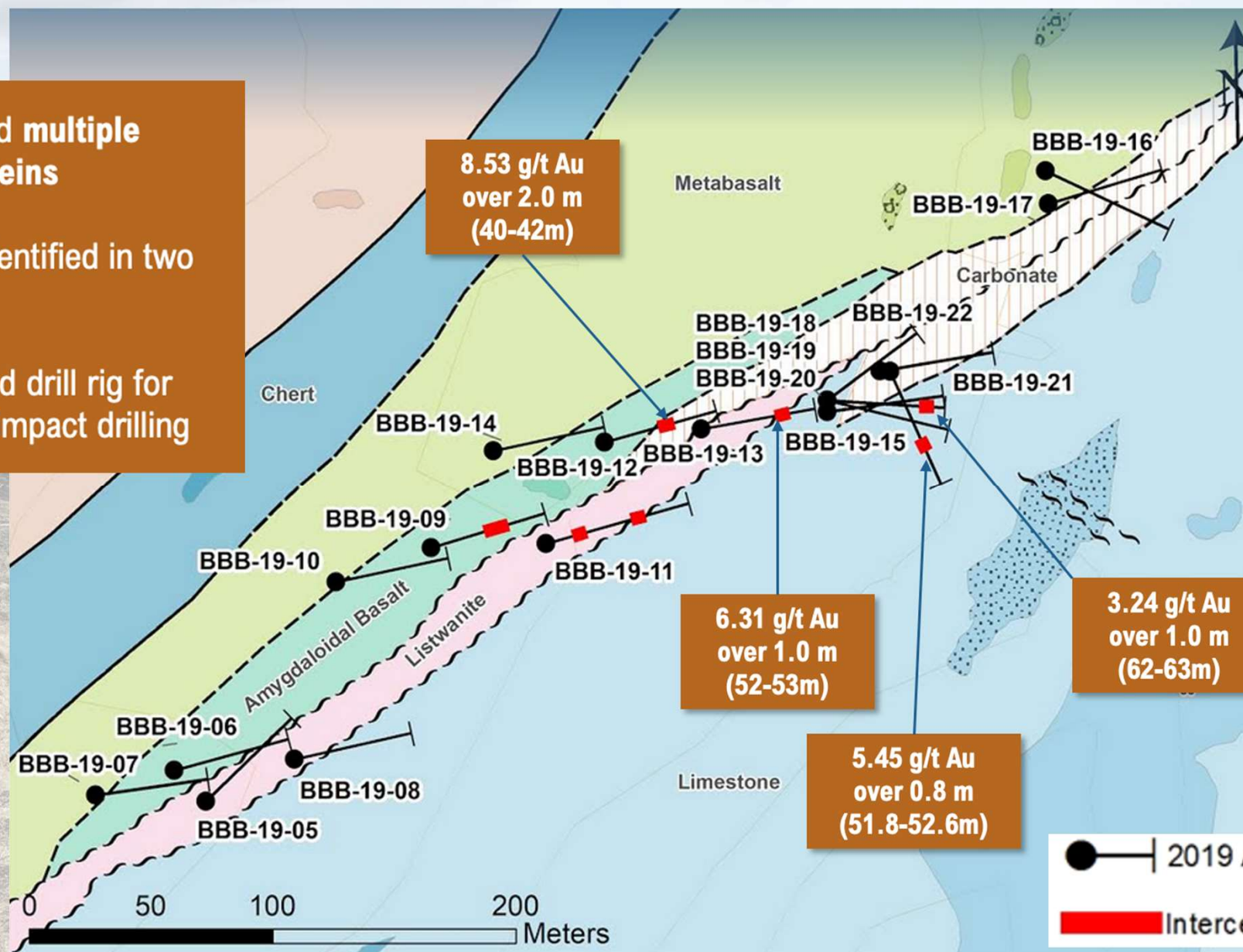


# LD SHOWING DRILL RESULTS 2019

18



- All holes intercepted **multiple quartz-carbonate veins**
- **Visible gold** was identified in two holes
- Small track mounted drill rig for low environmental impact drilling





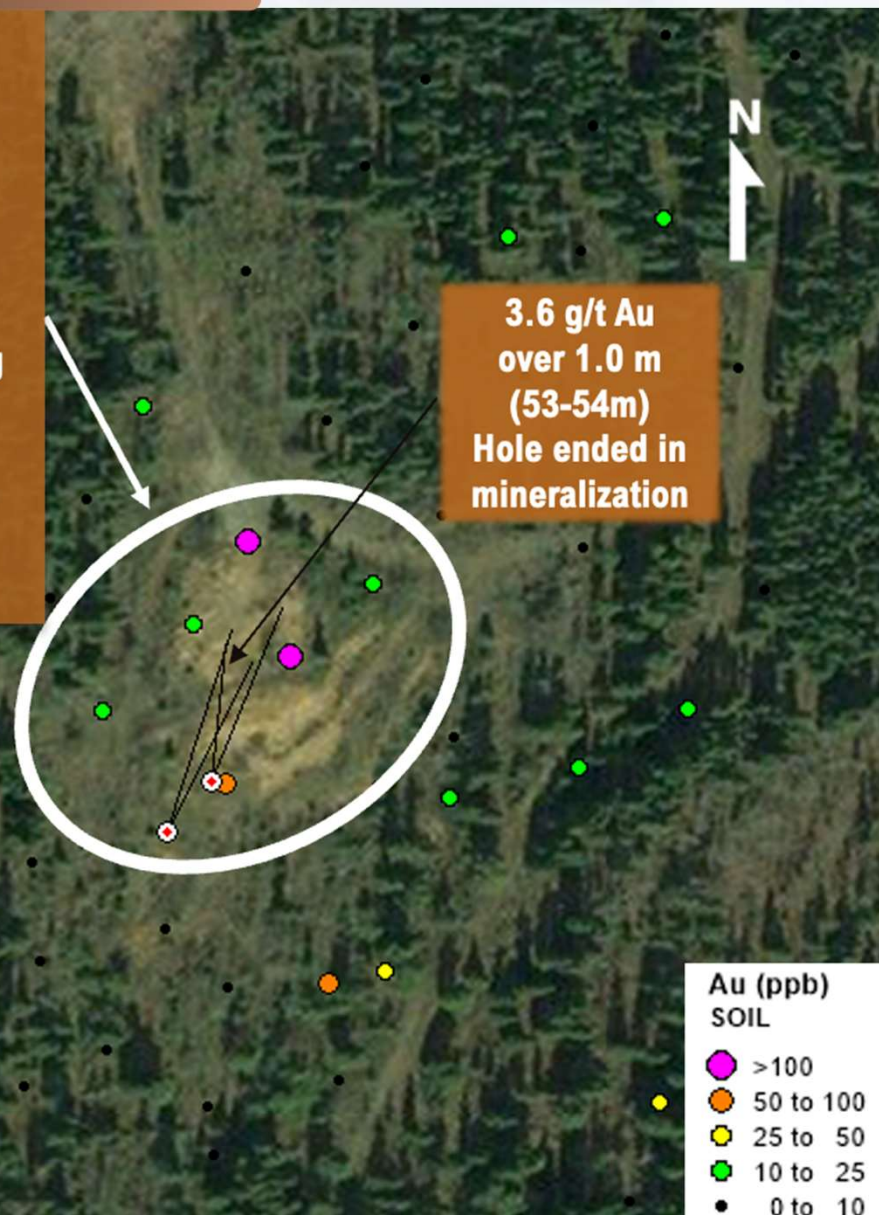
# PICTOU GOLD & SILVER

19



## Old workings & samples include:

- 30m adit and shallow shaft
- One ton bulk sample grading 9.22 g/t Au & 250 g/t Ag (1968)\*
- 2m Trench samples (1987)\*\*
  - 14.29g/t Au & 183.8g/t Ag
  - 7.26g/t Au & 130.4g/t Ag
- Grab samples (1966 & 1968)\*\*
  - 74.1g/t Au & 7,107g/t Ag
  - 61.0g/t Au & 4,649g/t Ag



• The gold mineralization is hosted in **quartz-carbonate veins** with arsenopyrite and iron-oxide alteration.

• Gold occurrences were first reported in 1931 by J.T. Mandy.

• In 2019 Brixton drilled four shallow holes at Pictou, with one ending in mineralization of 1m @ 3.6 g/t Au at 53m depth.

\*Minister of Mines Annual Report 1968, page A52














\*\* McIvor, D. 1988, Summary Report of Mineral Exploration Activity on the Pictou Property. Homestake Mineral Development Co .Ltd. BC Assessment Report 17656. p.83



# BRIXTON PROJECT 2016-2023

20



-  Acquisition in 2016
-  Consolidated the claims into one regional land package, covering the major gold prospects
-  Over 39,500m of drilling completed across the property
  -  Drilled 1,599 m in 2019 at LD and Pictou (22 collars)
  -  Drilled 292 m in 2022 at Yellowjacket (2 collars)
  -  Drilled 350 m in 2023 at Yellowjacket (1 collar)
-  Collected and compiled thousands of surface samples:
  -  2,140 rock samples
  -  12,650 soil samples
  -  210 silt samples and 23 associated bulk leach extractable gold samples (BLEG)
  -  161 biogeochemical samples (leaves, twigs, etc.)
-  6,563-line km of geophysical surveys completed
-  Detailed lithological and alteration mapping across 3 target areas



# ATLIN SUMMARY

21



## DISTRICT SCALE GOLD PROPERTY

- 578.9 km<sup>2</sup> mineral tenure
- 100% Brixton owned with low to no NSR's

## OROGENIC GOLD

- Orogenic gold deposits have a proven track record of high-grade systems with great continuity at depth
- Previous exploration has focused solely on orogenic gold hosted by ultramafic & mafic rocks in the district, and it is now known that sedimentary rocks are also host to gold mineralization

## INTRUSION-RELATED GOLD

- Recent studies indicate that local sharp-edged, placer gold nuggets are directly linked to the Surprise Lake Batholith.
- Preliminary geochemical surveys indicate areas that are highly anomalous in intrusion-related trace elements

## POTENTIAL

- Permitted 200 ton per day mine (75,000 t/year)
- Historic gold recovery through simple gravity circuit (cyanide-free, no chemicals required).

### OBJECTIVE:

Find the source of Atlin's placer gold

Drill Ready and  
Seeking JV Partner





[www.brixtonmetals.com](http://www.brixtonmetals.com)



[info@brixtonmetals.com](mailto:info@brixtonmetals.com)



1-604-630-9707



Suite 551 - 409 Granville Street  
Vancouver, BC V6C 1T2



SCAN ME

TSX: **BBB** | OTCQB: **BBBXF** | FR: **8BX1**